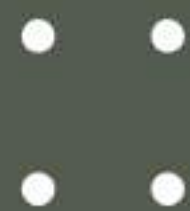




Centurion Stands



Information Pack



ABOUT CENTURION STANDS

Incredible rental investment opportunity or for building your own home. With Pretoria CBD, Midrand, Centurion, Randburg and major highways only a few minutes away, this could be an idea rental development for your passive income... or you can invest in on your home.

With a GDP of US\$75.6 Billion and a population of almost 1 million people, you have great passive income opportunities when you have property in Pretoria. There are mines, government departments, private companies, industrial and many other industries within the city.



DITABENG AFRIKA HOLDINGS

Interior perspective



ABOUT CENTURION STANDS

In the country side of the capital city of South Africa, and around high end residential country estates, you will find this development. Our Centurion Stands are located near Forest Hill Mall, Monavoni, Raslouw Hospital Erasmia and Copperleaf Estate. This area is selected strategically to influence the growth of your investment positively. This is perfectly located because all major economic hubs are very easy to reach. The N14 highway is just a few minutes away, allowing easy access to transit routes to the major financial hubs of the Gauteng province.

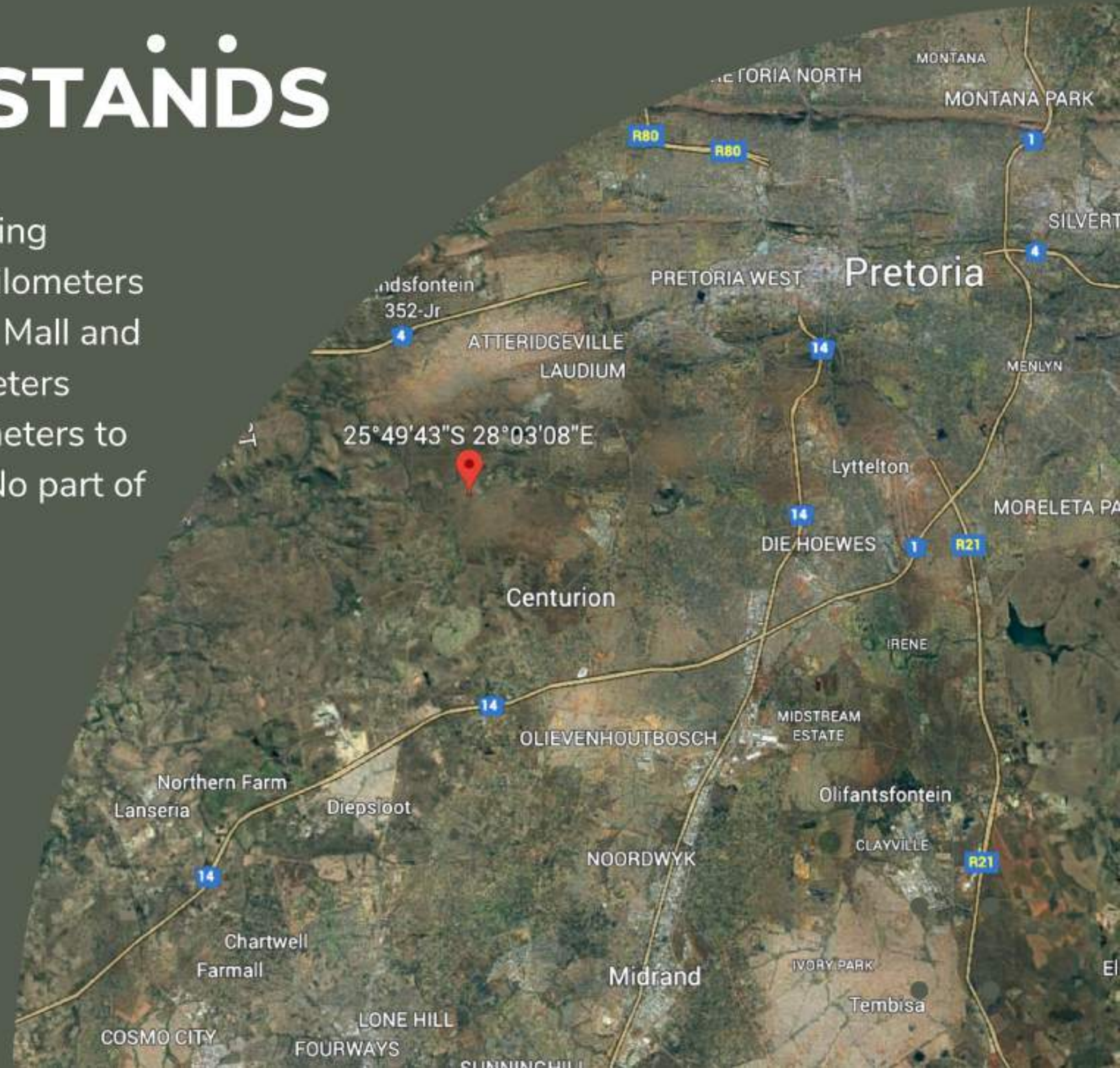


DITABENG AFRIKA HOLDINGS



ABOUT CENTURION STANDS

10km from N14 highway. 5mins away from the amazing Copperleaf Estate with houses worth over R10m. 8 Kilometers from the new Raslow Hospital. 10km from Forest Hill Mall and Mall@55. 15 Kilometers from Pretoria CBD. 20 Kilometers from Menlyn Mall. 45 Kilometers to Sandton. 60 Kilometers to O.R. Tambo International Airport. Just near the N14. No part of Gauteng's financial hub is out of reach.





349

Drive-way perspective

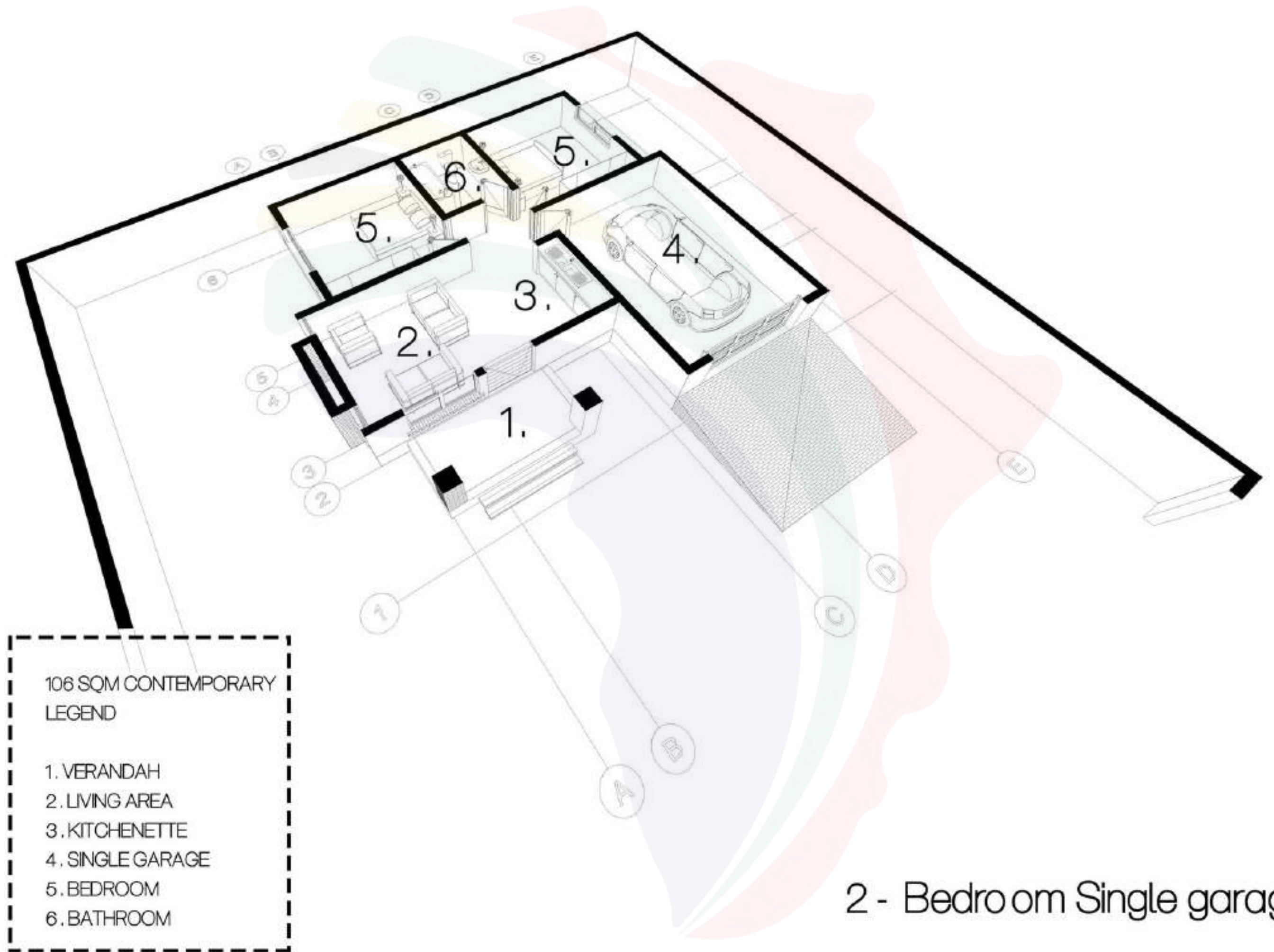


DITABENG AFRIKA HOLDINGS



Verandah perspective





- 106 SQM CONTEMPORARY
LEGEND
- 1. VERANDAH
 - 2. LIVING AREA
 - 3. KITCHENETTE
 - 4. SINGLE GARAGE
 - 5. BEDROOM
 - 6. BATHROOM

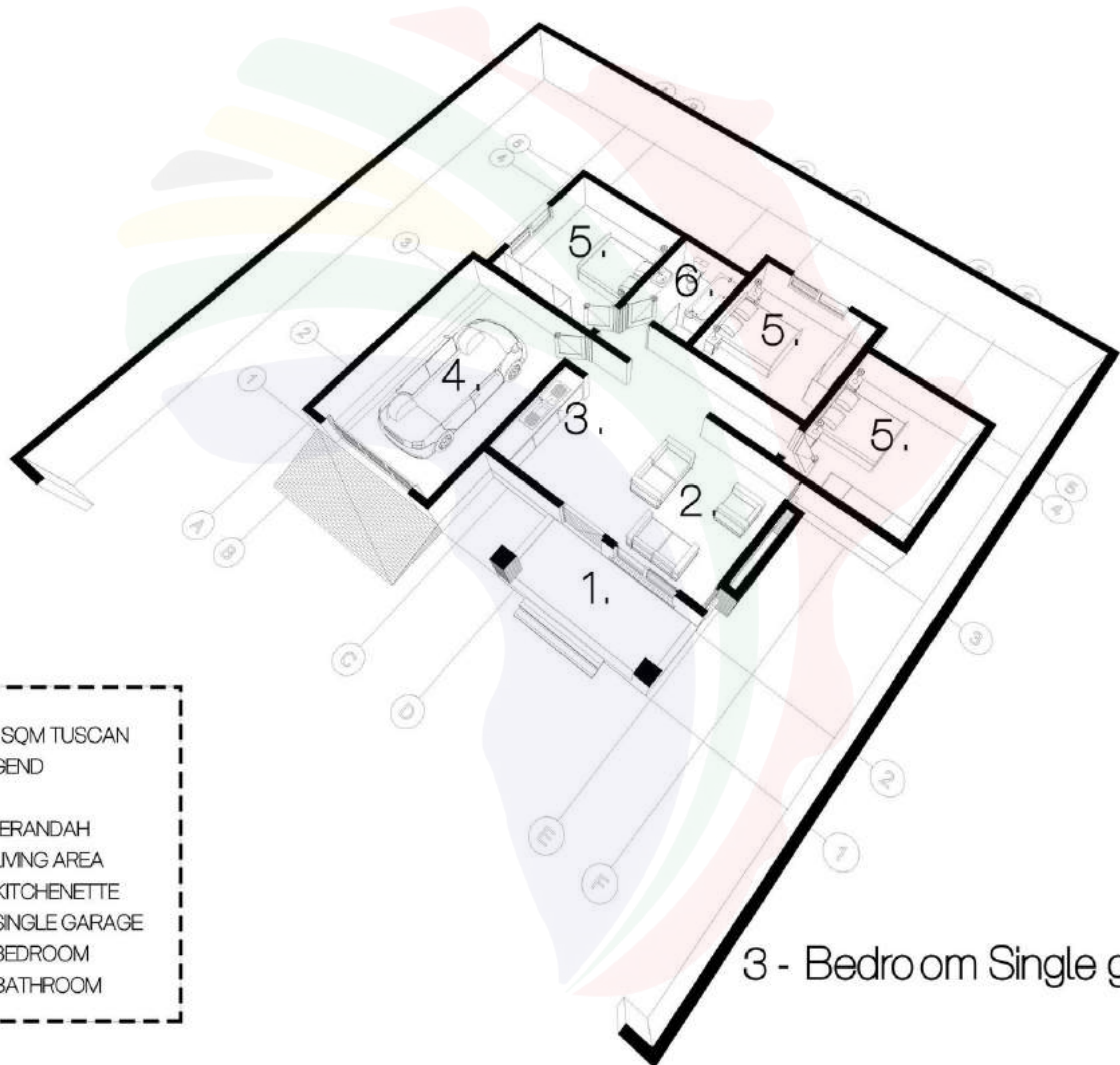
2 - Bedroom Single garage



DITABENG AFRIKA HOLDINGS

PERSPECTIVE

- 123 SQM TUSCAN
LEGEND
- 1. VERANDAH
 - 2. LIVING AREA
 - 3. KITCHENETTE
 - 4. SINGLE GARAGE
 - 5. BEDROOM
 - 6. BATHROOM



3 - Bedro om Single garage



PERSPECTIVE

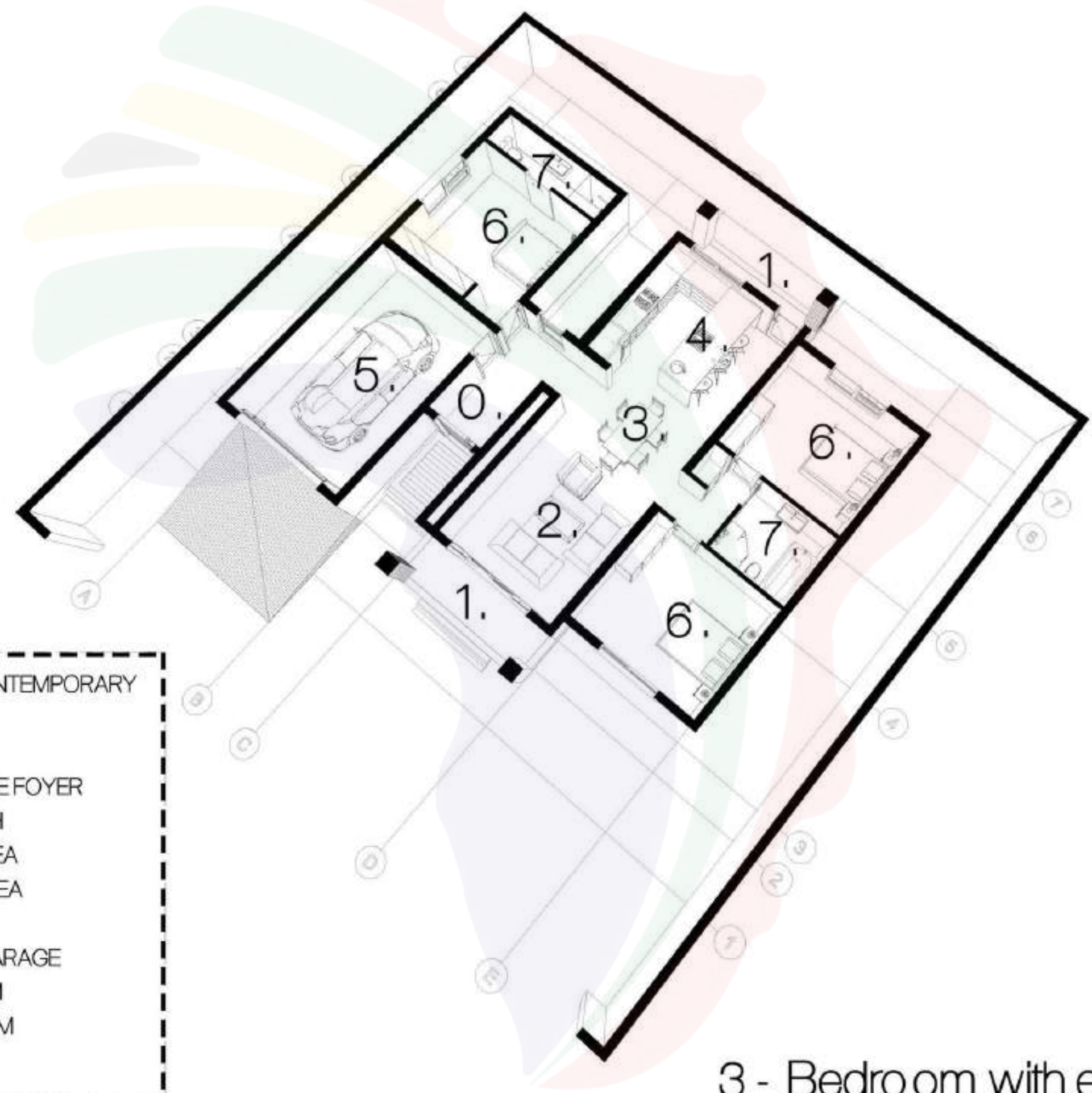


- 142 SQM CONTEMPORARY
LEGEND
- 1. VERANDAH
 - 2. LIVING AREA
 - 3. DINING AREA
 - 4. KITCHEN
 - 5. DOUBLE GARAGE
 - 6. BEDROOM
 - 7. BATHROOM

3 - Bedroom double garage



PERSPECTIVE



165 SQM CONTEMPORARY
LEGEND

- 0. ENTRANCE FOYER
- 1. VERANDAH
- 2. LIVING AREA
- 3. DINING AREA
- 4. KITCHEN
- 5. SINGLE GARAGE
- 6. BEDROOM
- 7. BATHROOM
- 8. EN-SUITE

3 - Bedroom with en-suite & single garage



PERSPECTIVE

- 178 SQM CONTEMPORARY
LEGEND
- 0. ENTRANCE FOYER
 - 1. VERANDAH
 - 2. LIVING AREA
 - 3. DINING AREA
 - 4. KITCHEN
 - 5. DOUBLE GARAGE
 - 6. BEDROOM
 - 7. BATHROOM
 - 8. EN-SUITE

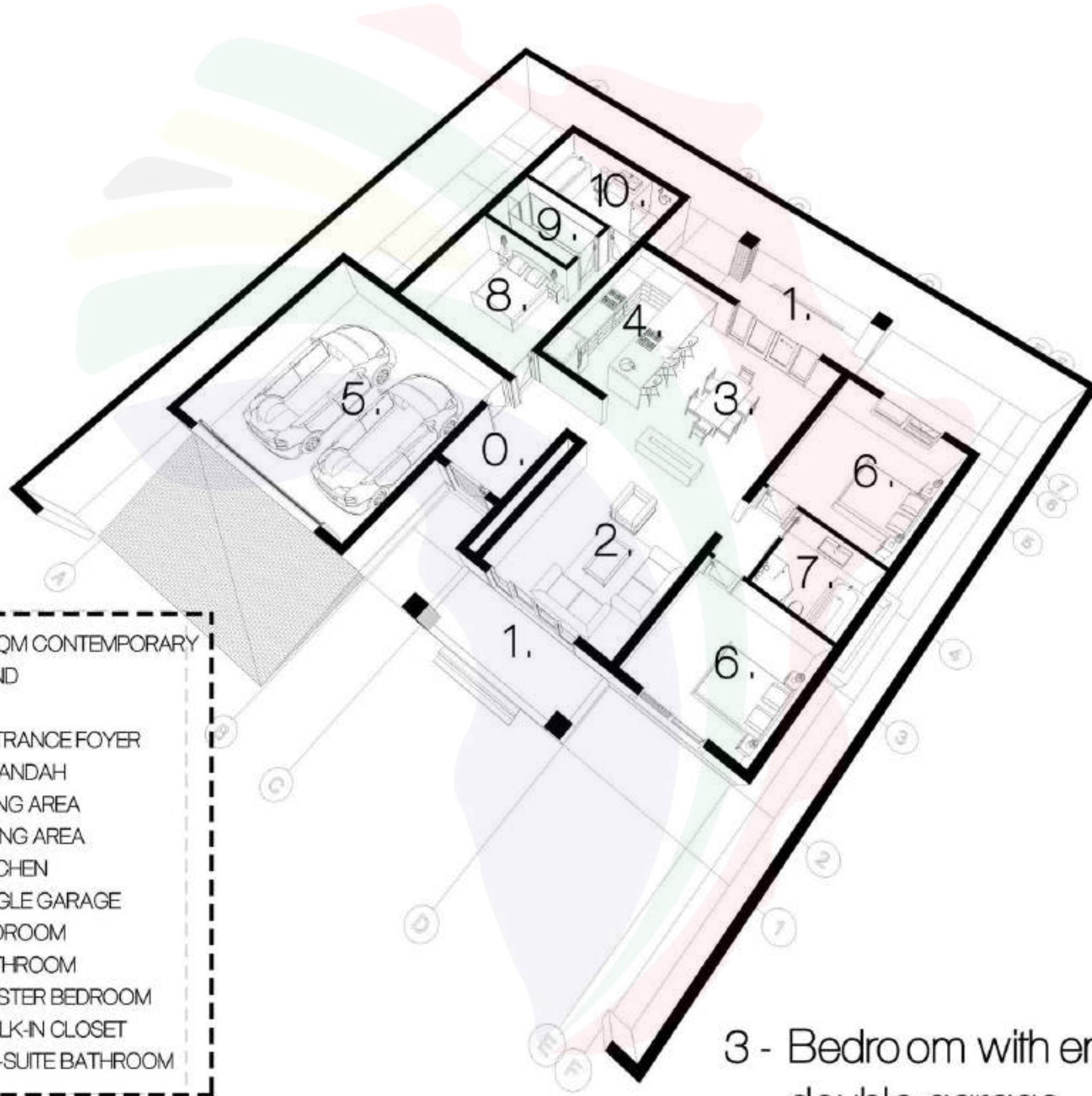


3 - Bedroom with en-suite & double garage



PERSPECTIVE

- 203 SQM CONTEMPORARY
LEGEND
- 0. ENTRANCE FOYER
 - 1. VERANDAH
 - 2. LIVING AREA
 - 3. DINING AREA
 - 4. KITCHEN
 - 5. SINGLE GARAGE
 - 6. BEDROOM
 - 7. BATHROOM
 - 8. MASTER BEDROOM
 - 9. WALK-IN CLOSET
 - 10. EN-SUITE BATHROOM



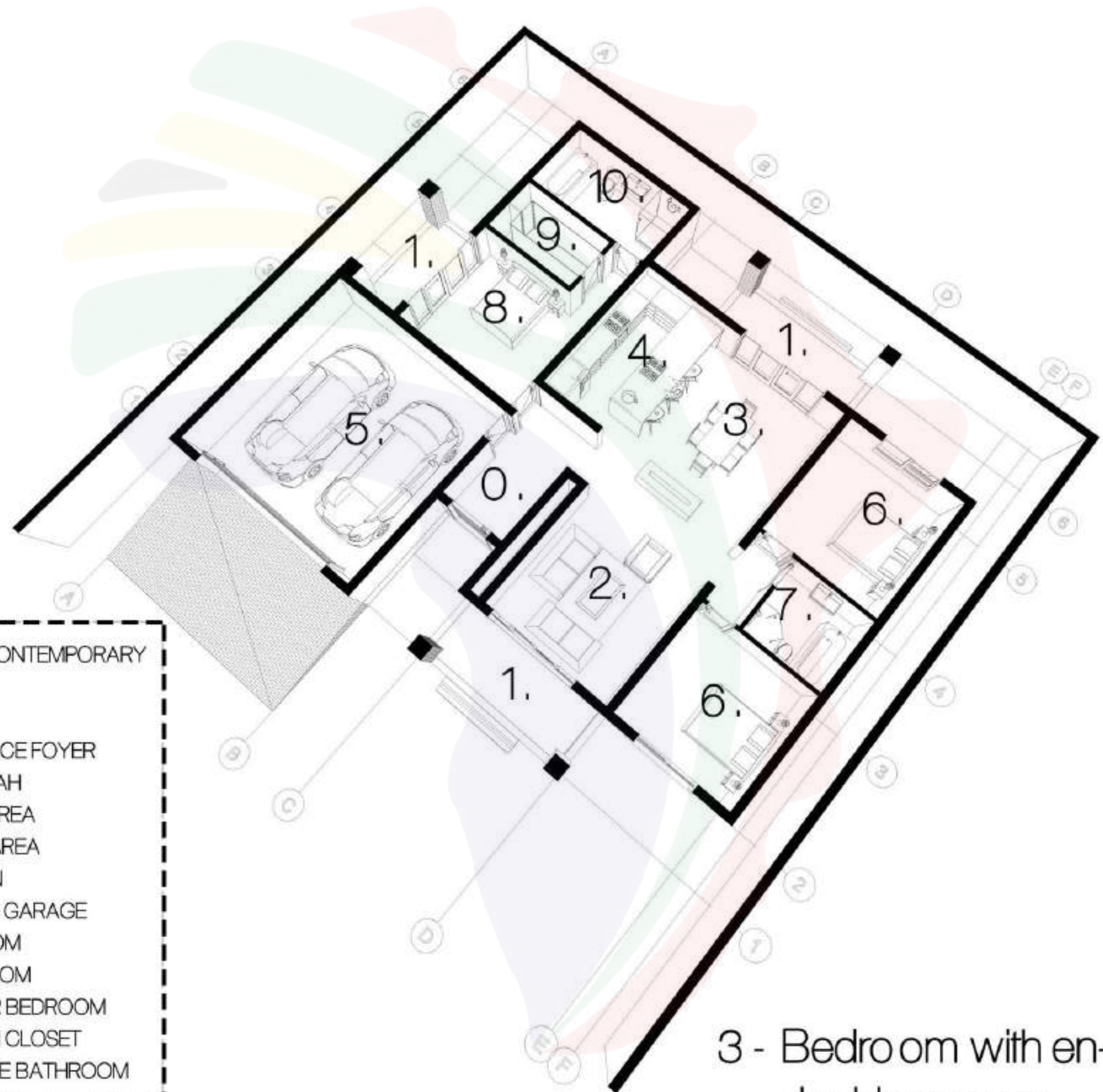
3 - Bedroom with en-suite & double garage



DITABENG AFRIKA HOLDINGS

PERSPECTIVE

- 213 SQM CONTEMPORARY
LEGEND
- 0. ENTRANCE FOYER
 - 1. VERANDAH
 - 2. LIVING AREA
 - 3. DINING AREA
 - 4. KITCHEN
 - 5. DOUBLE GARAGE
 - 6. BEDROOM
 - 7. BATHROOM
 - 8. MASTER BEDROOM
 - 9. WALK-IN CLOSET
 - 10. EN-SUITE BATHROOM



3 - Bedroom with en-suite & double garage



PERSPECTIVE



DITABENG AFRIKA HOLDINGS

PERSPECTIVE



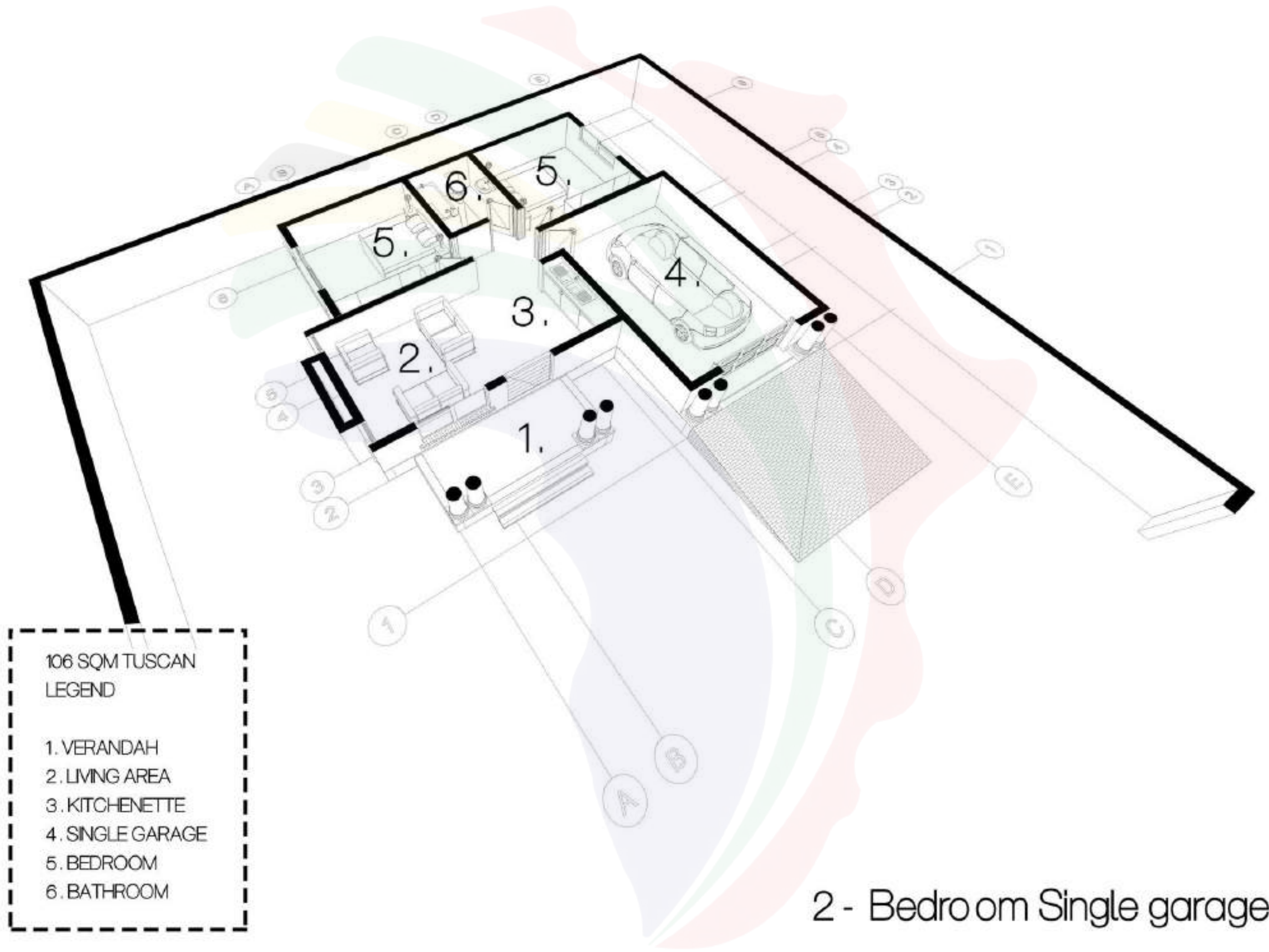
Drive-way perspective





Front patio perspective



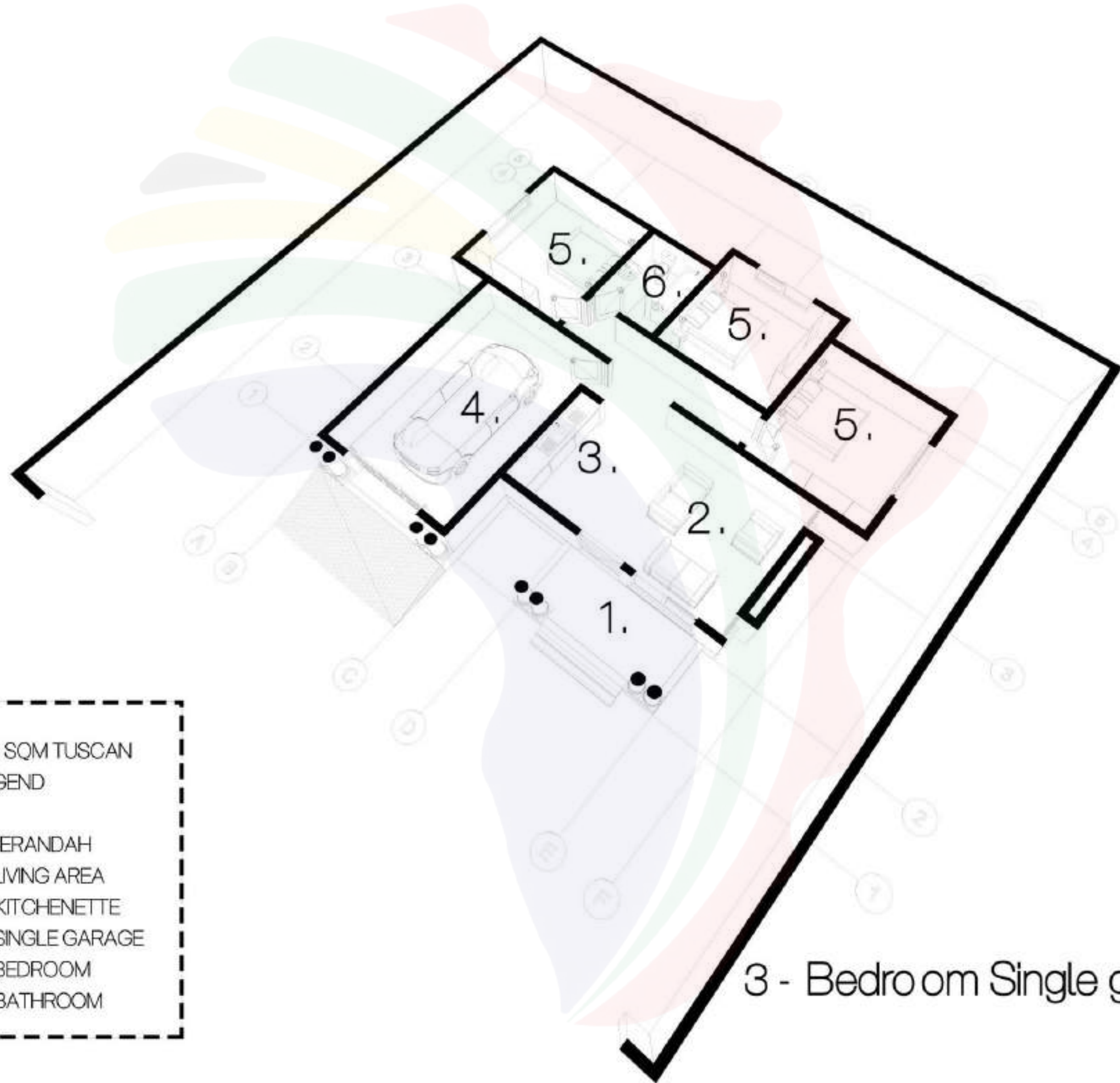


- 106 SQM TUSCAN
LEGEND
- 1. VERANDAH
 - 2. LIVING AREA
 - 3. KITCHENETTE
 - 4. SINGLE GARAGE
 - 5. BEDROOM
 - 6. BATHROOM

2 - Bedroom Single garage



PERSPECTIVE



130 SQM TUSCAN
LEGEND

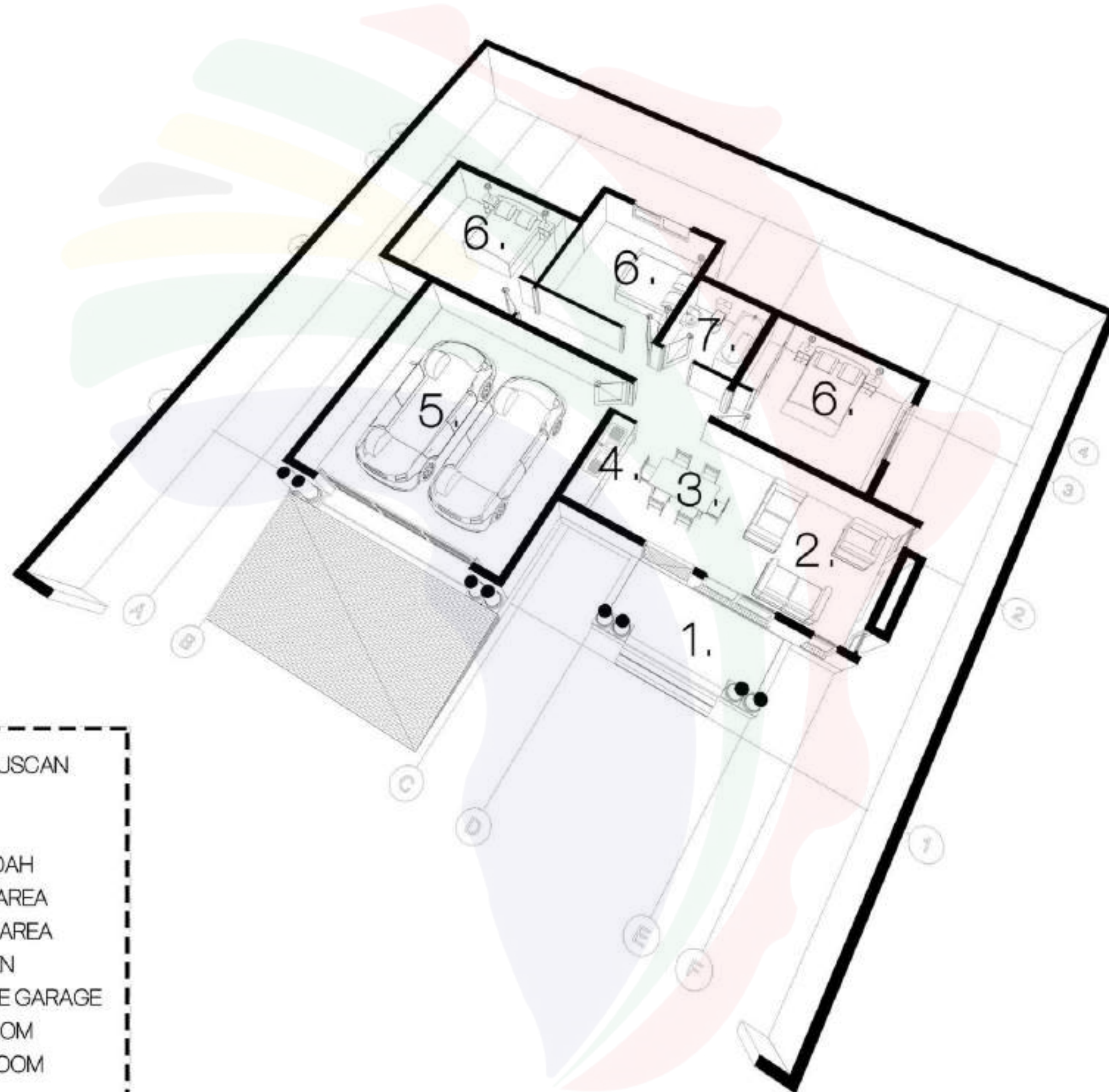
- 1. VERANDAH
- 2. LIVING AREA
- 3. KITCHENETTE
- 4. SINGLE GARAGE
- 5. BEDROOM
- 6. BATHROOM

3 - Bedroom Single garage



DITABENG AFRIKA HOLDINGS

PERSPECTIVE



- 141 SQM TUSCAN
LEGEND
- 1. VERANDAH
 - 2. LIVING AREA
 - 3. DINING AREA
 - 4. KITCHEN
 - 5. DOUBLE GARAGE
 - 6. BEDROOM
 - 7. BATHROOM

3 - Bedro om double garage



PERSPECTIVE

- 162 SQM TUSCAN
LEGEND
- 1. VERANDAH
 - 2. LIVING AREA
 - 3. DINING AREA
 - 4. KITCHEN
 - 5. SINGLE GARAGE
 - 6. BEDROOM
 - 7. BATHROOM
 - 8. EN-SUITE



3 - Bedro om Single garage



DITABENG AFRIKA HOLDINGS

PERSPECTIVE

168 SQM TUSCAN LEGEND	
1.	VERANDAH
2.	LIVING AREA
3.	DINING AREA
4.	KITCHEN
5.	DOUBLE GARAGE
6.	BEDROOM
7.	BATHROOM
8.	EN-SUITE



3 - Bedroom double garage with en-suite



PERSPECTIVE

- 180 SQM TUSCAN
LEGEND
- 1. VERANDAH
 - 2. LIVING AREA
 - 3. DINING AREA
 - 4. KITCHEN
 - 5. SINGLE GARAGE
 - 6. BEDROOM
 - 7. BATHROOM
 - 8. MASTER BEDROOM
 - 9. WALK-IN CLOSET
 - 10. EN-SUITE BATHROOM



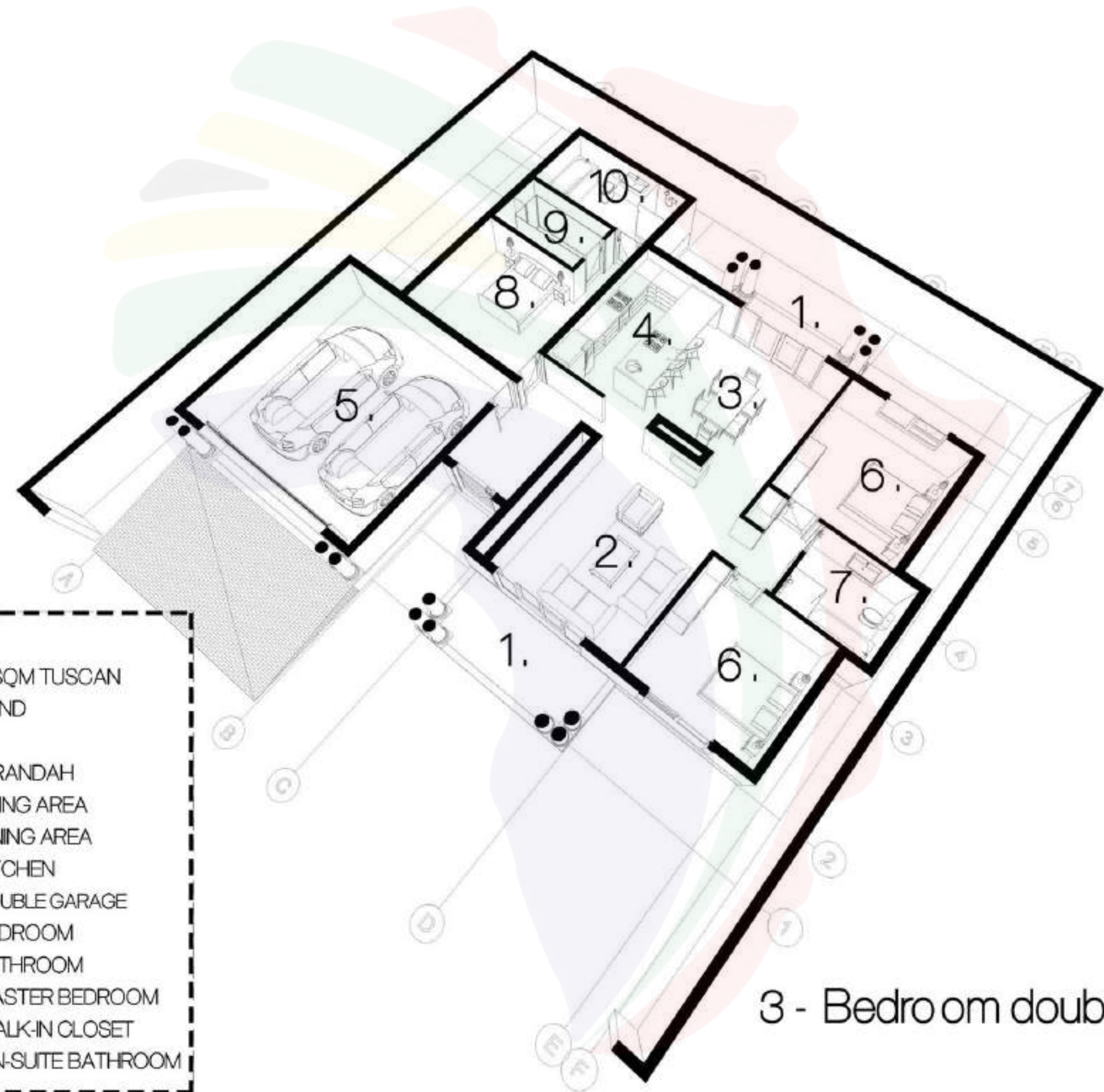
3 - Bedroom single garage with en-suite



DITABENG AFRIKA HOLDINGS

PERSPECTIVE

- 203 SQM TUSCAN
LEGEND
- 1. VERANDAH
 - 2. LIVING AREA
 - 3. DINING AREA
 - 4. KITCHEN
 - 5. DOUBLE GARAGE
 - 6. BEDROOM
 - 7. BATHROOM
 - 8. MASTER BEDROOM
 - 9. WALK-IN CLOSET
 - 10. EN-SUITE BATHROOM



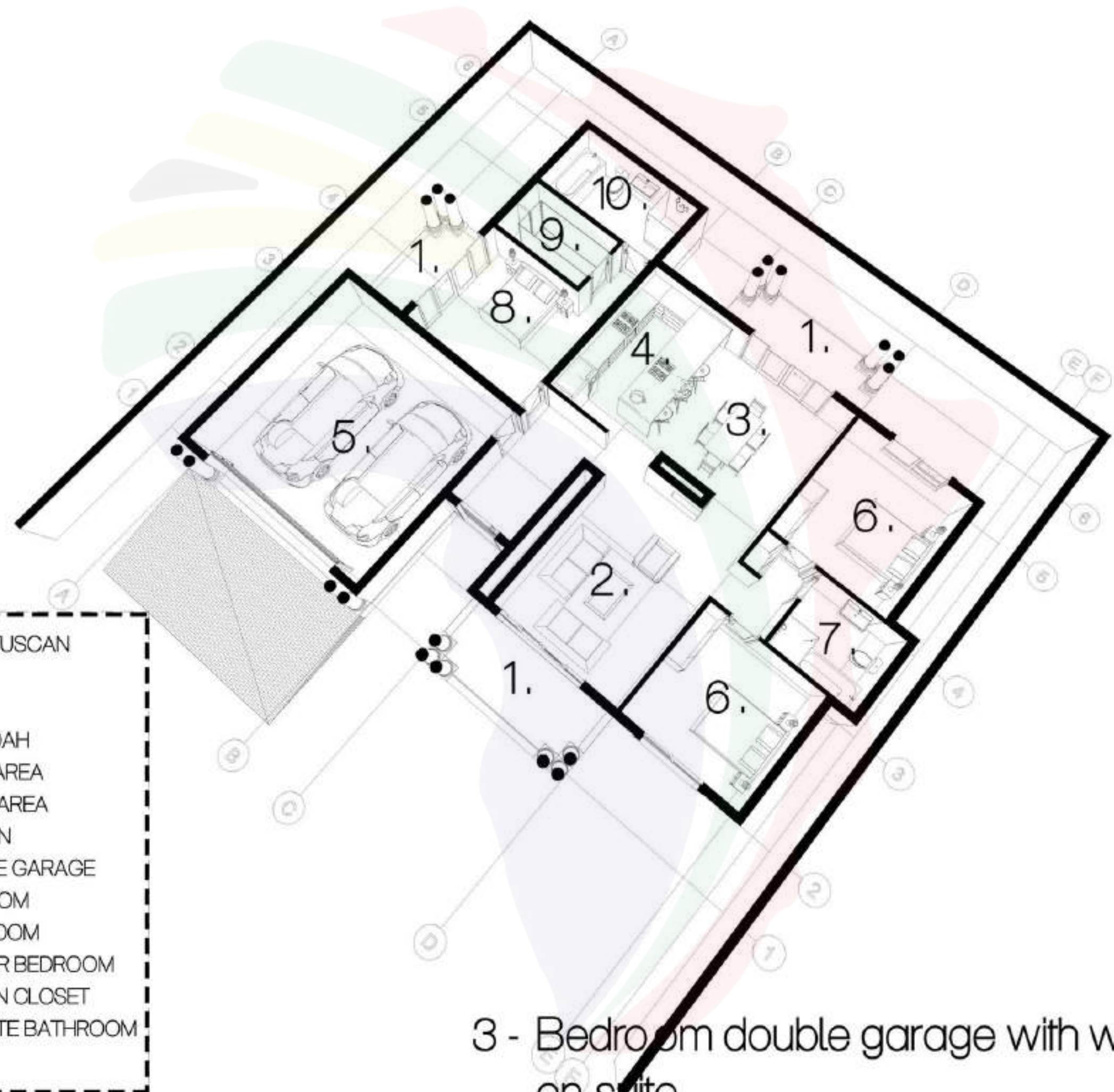
3 - Bedroom double garage



DITABENG AFRIKA HOLDINGS

PERSPECTIVE

- 213 SQM TUSCAN
LEGEND
- 1. VERANDAH
 - 2. LIVING AREA
 - 3. DINING AREA
 - 4. KITCHEN
 - 5. DOUBLE GARAGE
 - 6. BEDROOM
 - 7. BATHROOM
 - 8. MASTER BEDROOM
 - 9. WALK-IN CLOSET
 - 10. EN-SUITE BATHROOM



3 - Bedroom double garage with walkin clst & en-suite



PERSPECTIVE

- 240 SQM TUSCAN
LEGEND
- 1. VERANDAH
 - 2. LIVING AREA
 - 3. DINING AREA
 - 4. KITCHEN
 - 5. DOUBLE GARAGE
 - 6. BEDROOM
 - 7. BATHROOM
 - 8. MASTER BEDROOM
 - 9. WALK-IN CLOSET
 - 10. EN-SUITE BATHROOM



3 - Bedroom double garage with walkin ,
en-suite and out building



PERSPECTIVE

CONTACT US



Phone Number

012 003 2900 / 087 265 9488

Email Address

info@ditabengafrika.co.za

WhatsApp

068 374 0905

Website

www.ditabengafrika.co.za

Address

Ground Floor, Pegasus Building 1,
Menlyn Maine, Pretoria, 0081